

Paper Reference(s) 1BI0/2F  
Pearson Edexcel Level 1/Level 2 GCSE (9–1)

Biology  
PAPER 2  
Foundation Tier

Friday 9 June 2023 – Afternoon

Diagram Booklet

In the boxes below, write your name, centre number and candidate number.

Surname					
Other names					
Centre Number					
Candidate Number					

## INSTRUCTIONS

There may be spare copies of some diagrams in case you need them.

**THIS DIAGRAM BOOKLET MUST BE RETURNED WITH THE QUESTION PAPER AT THE END OF THE EXAMINATION.**

## **Contents**

### **Page**

<b>5</b>	<b>Question 1(a)</b>
<b>6</b>	<b>Question 1(a)(iii)</b>
<b>7</b>	<b>Question 1(b)</b>
<b>8</b>	<b>Question 2(b)</b>
<b>9</b>	<b>Question 3(a)</b>
<b>10</b>	<b>Question 3(b)</b>
<b>11</b>	<b>Question 3(c)</b>
<b>12</b>	<b>Question 4(a)</b>
<b>13</b>	<b>Question 4(b)</b>
<b>14</b>	<b>Question 5(a)</b>
<b>15</b>	<b>Question 5(b)(i)</b>
<b>16</b>	<b>Question 5(b)(ii)</b>
<b>17</b>	<b>Question 6(b)</b>
<b>18</b>	<b>Question 7(a)</b>
<b>19</b>	<b>Question 7(c)</b>
<b>20</b>	<b>Question 8(a)</b>
<b>21</b>	<b>Question 9(c)</b>
<b>22</b>	<b>Question 10(a)</b>
<b>23</b>	<b>Question 10(b)</b>

**(continued on the next page)**

## **Contents continued.**

### **Spare Copies**

**24    Question 1(a)(iii)**

**25    Question 4(a)**

**26    Question 6(b)**

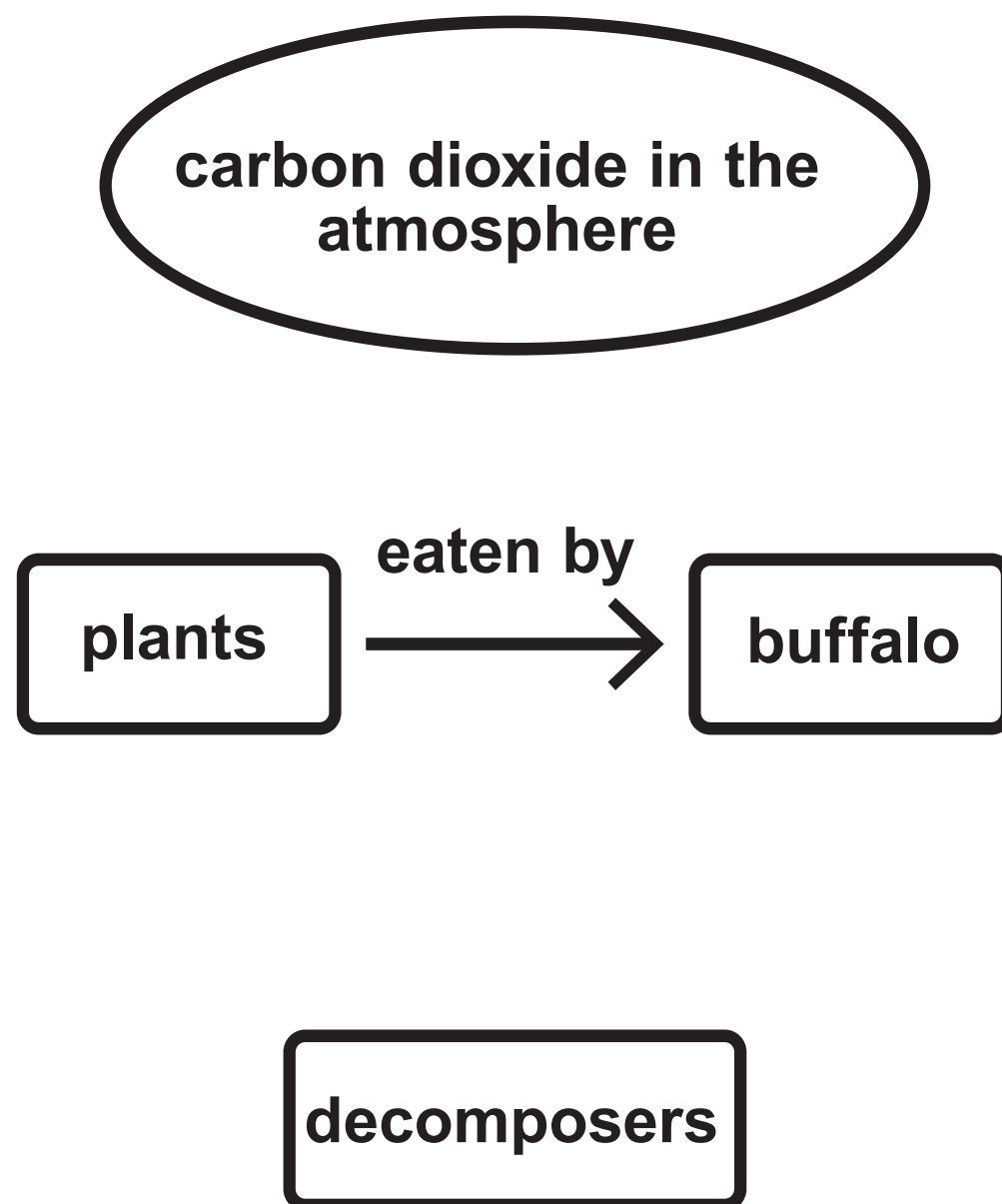
**FIGURE 1**

The black and white photograph shows an egret stood on the back of a buffalo in a river.



## Question 1(a)(iii)

FIGURE 2



## Question 1(b)

FIGURE 3

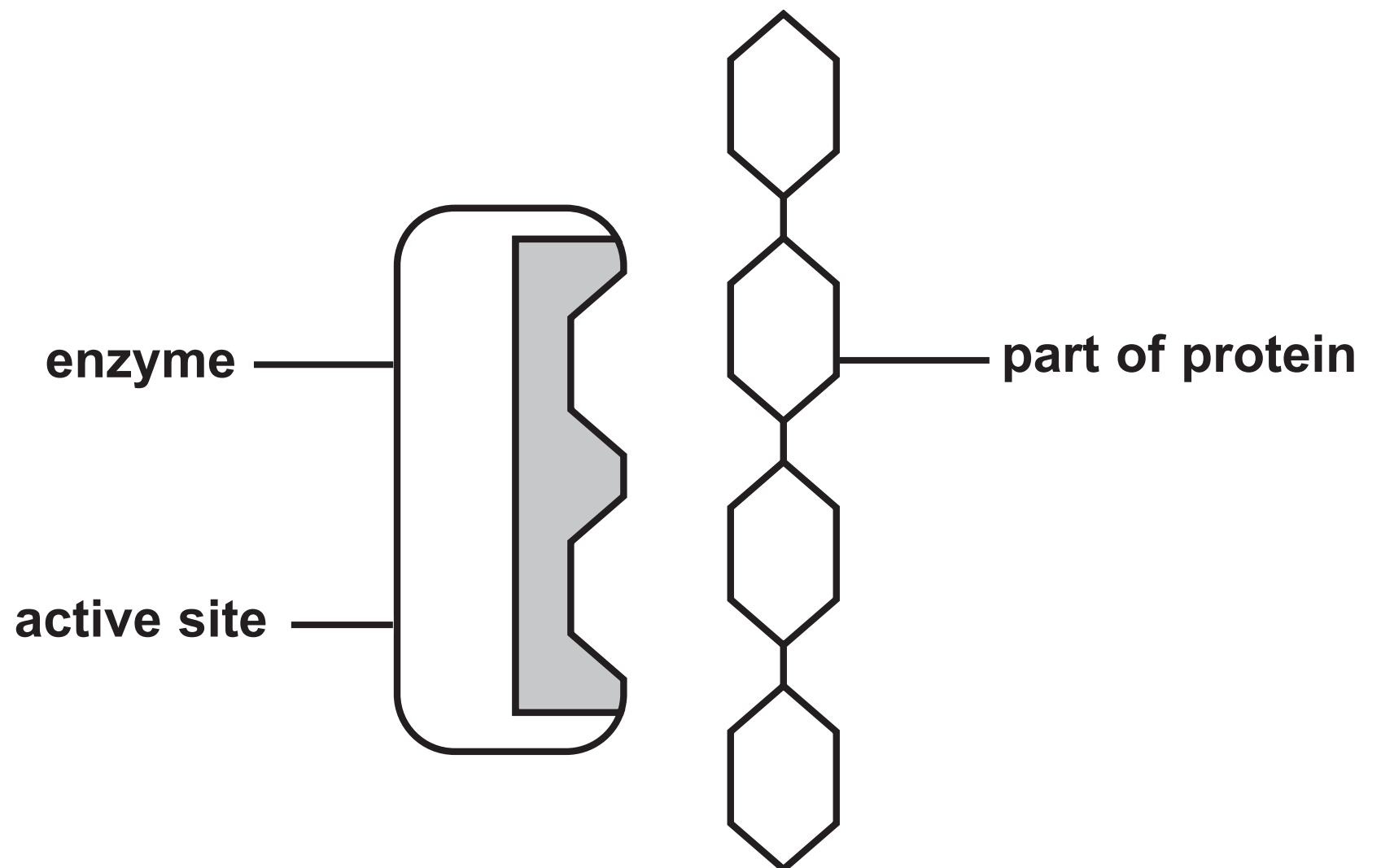
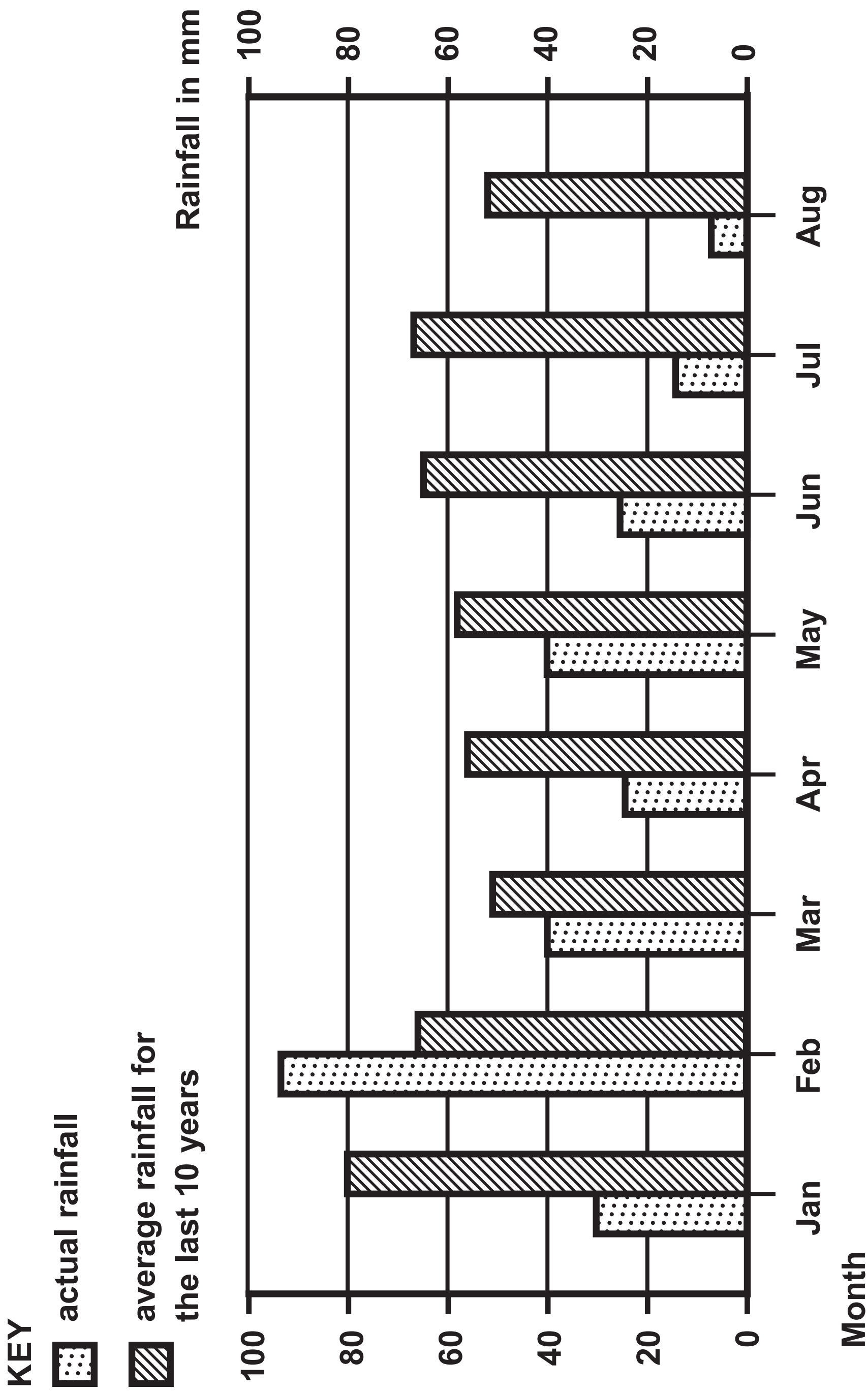


FIGURE 4





## Question 3(a)

FIGURE 5

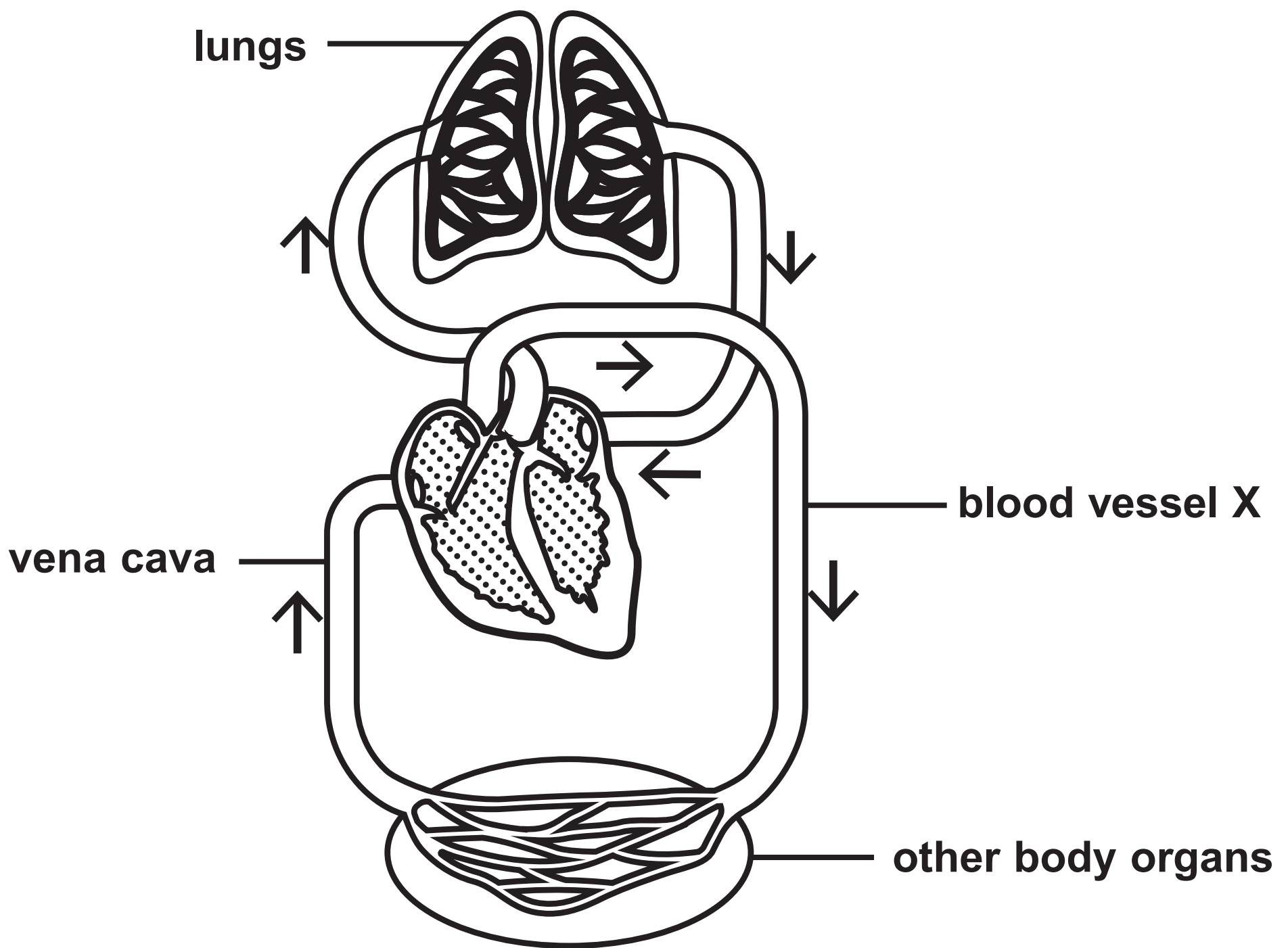
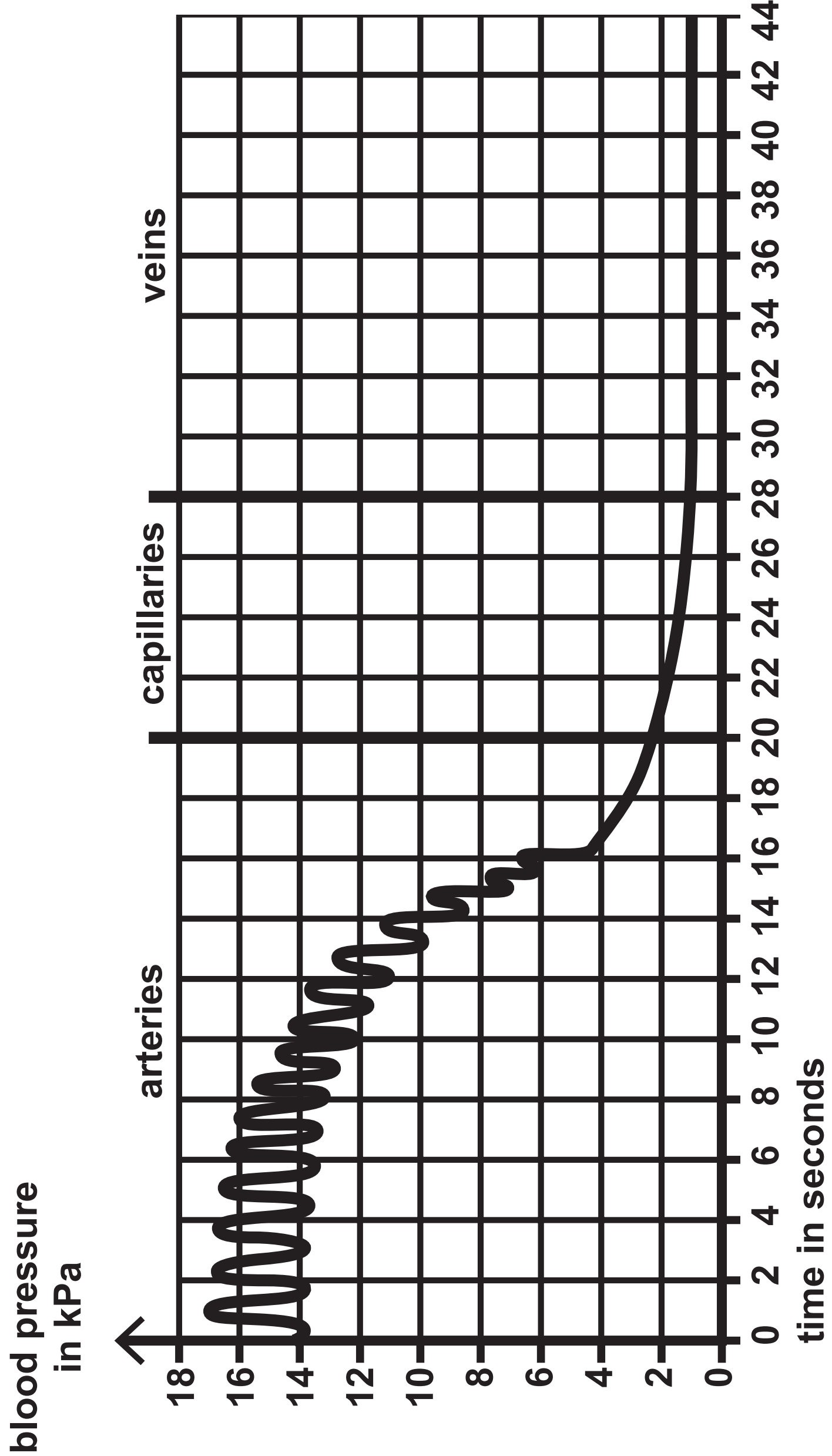


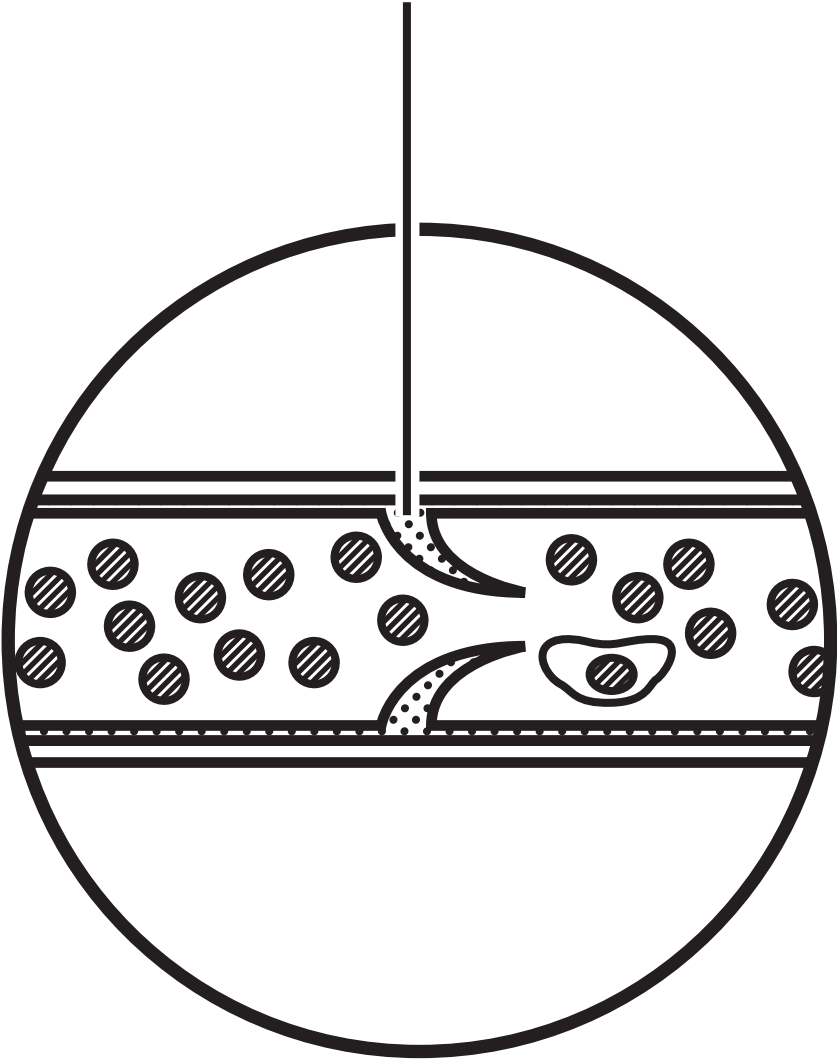
FIGURE 6



Question 3(c)

FIGURE 7

structure Q



Question 4(a)

**hormone**

thyroxine

adrenalin

**endocrine gland**

thyroid gland

pituitary gland

pancreas

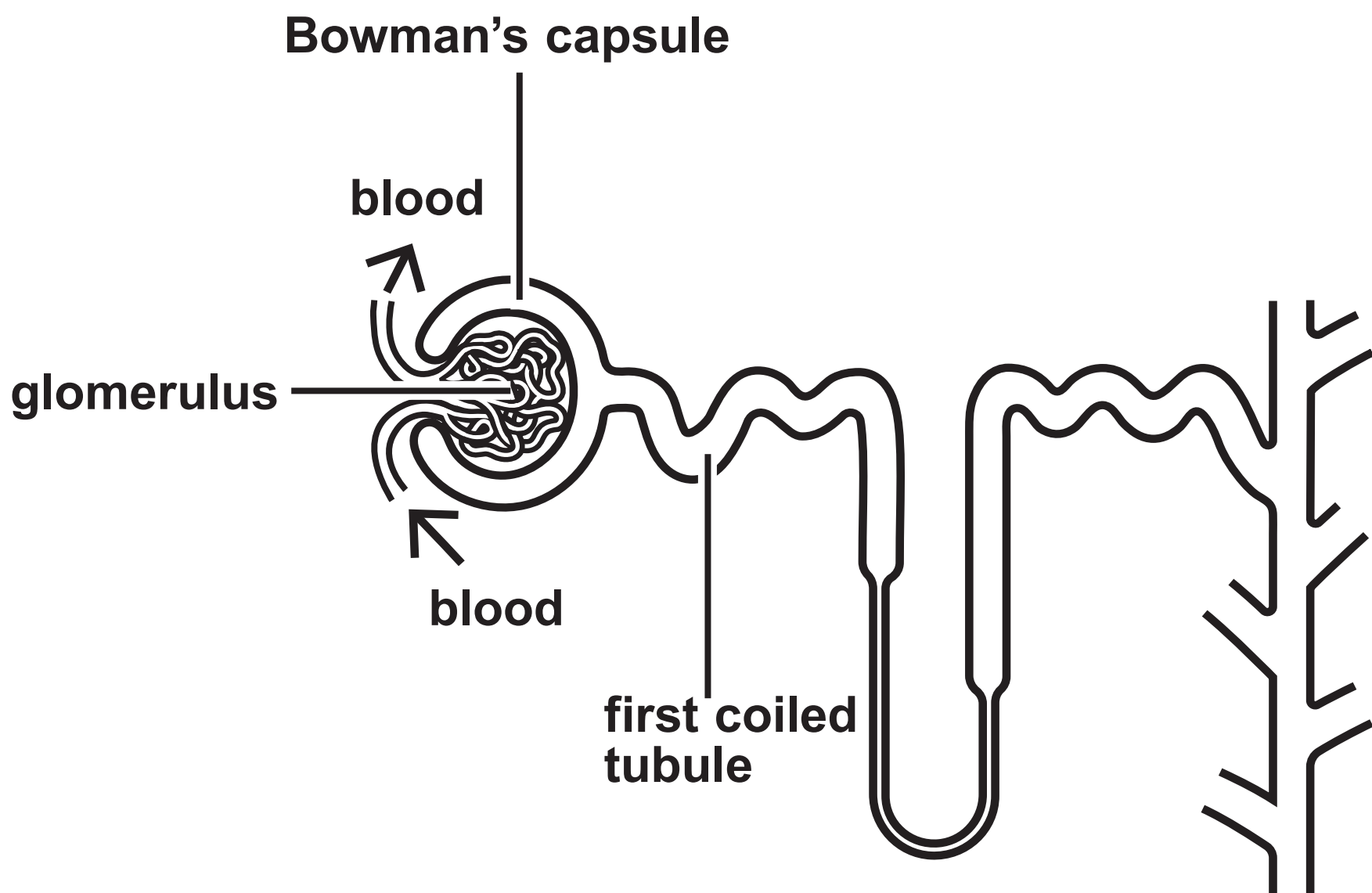
adrenal glands

ovaries



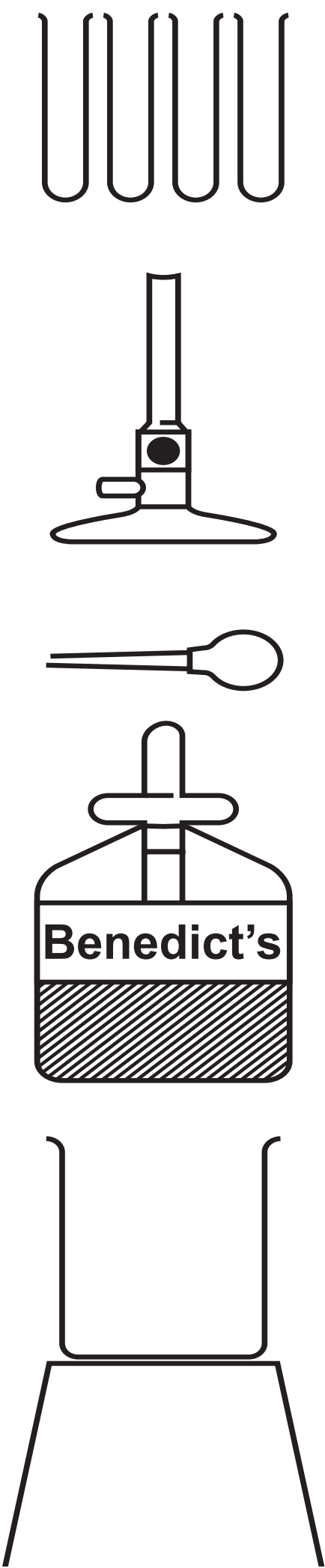
## Question 5(a)

FIGURE 9



Question 5(b)(i)

FIGURE 10



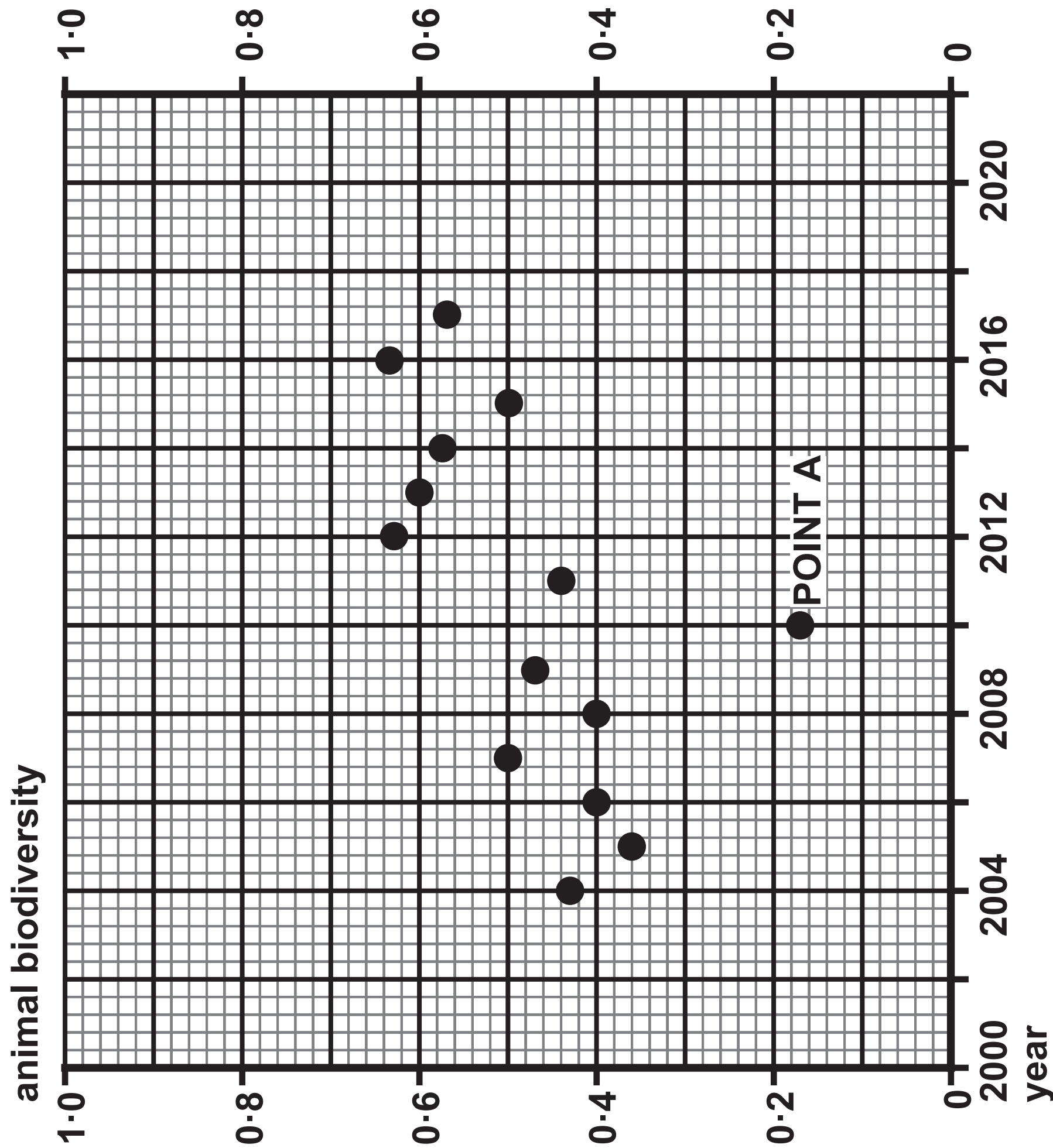
Question 5(b)(ii)

FIGURE 11

	part of nephron		
	Bowman's capsule	start of first coiled tubule	end of first coiled tubule
concentration of glucose in millimoles per dm <sup>3</sup>	8	8	0

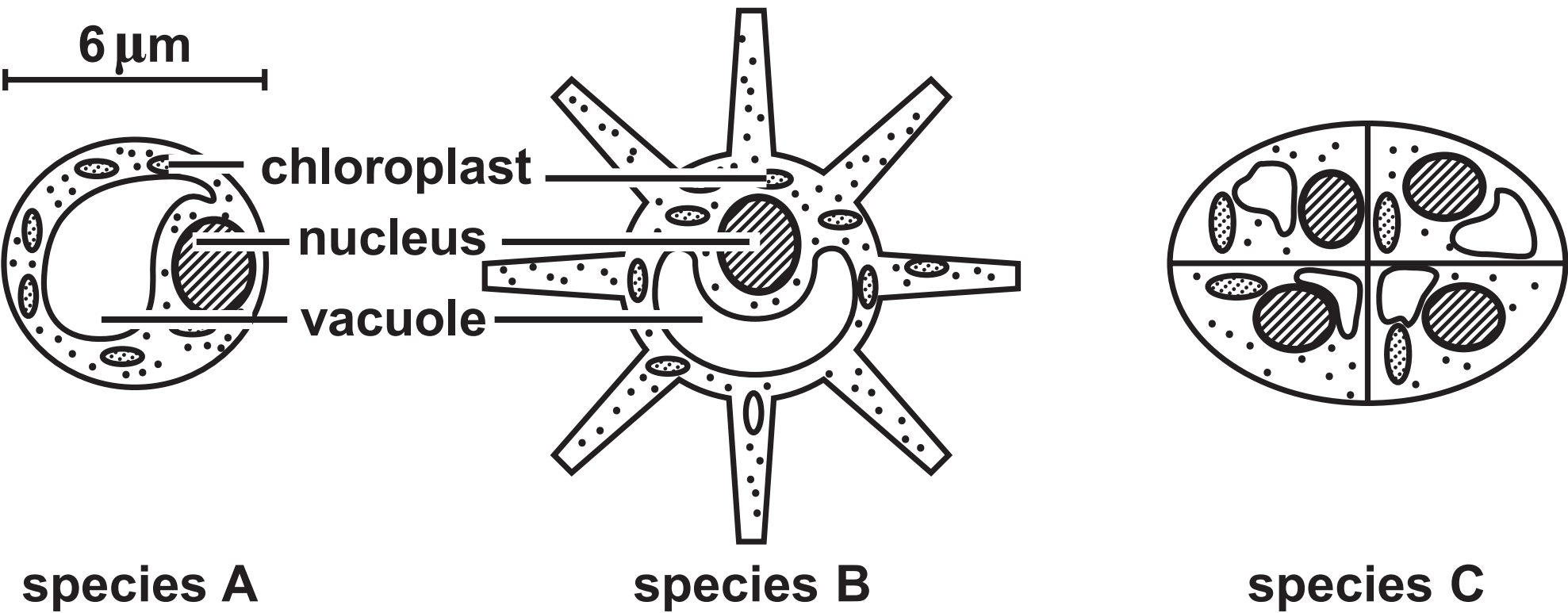


FIGURE 12



Question 7(a)

FIGURE 13



**FIGURE 14**

The black and white photograph shows large, round leaves on a branch that are holding raindrops from recent rainfall. Each leaf has a defined, upturned 'V'-shaped structure along the surface, evenly spaced apart.



KEY

— person with diabetes

- - - person who does not have diabetes

concentration of glucose in blood in mmol per dm<sup>3</sup>

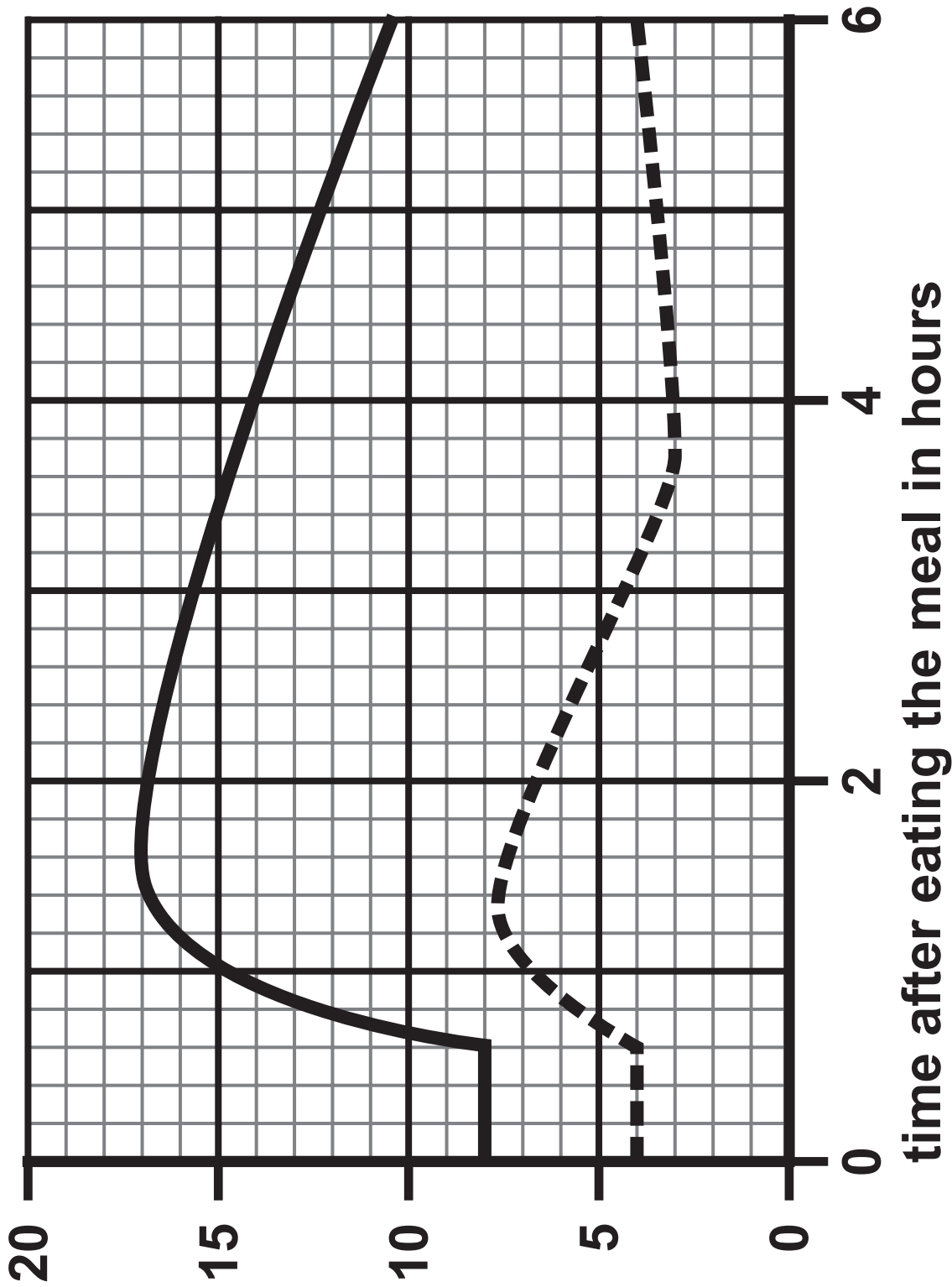


FIGURE 15

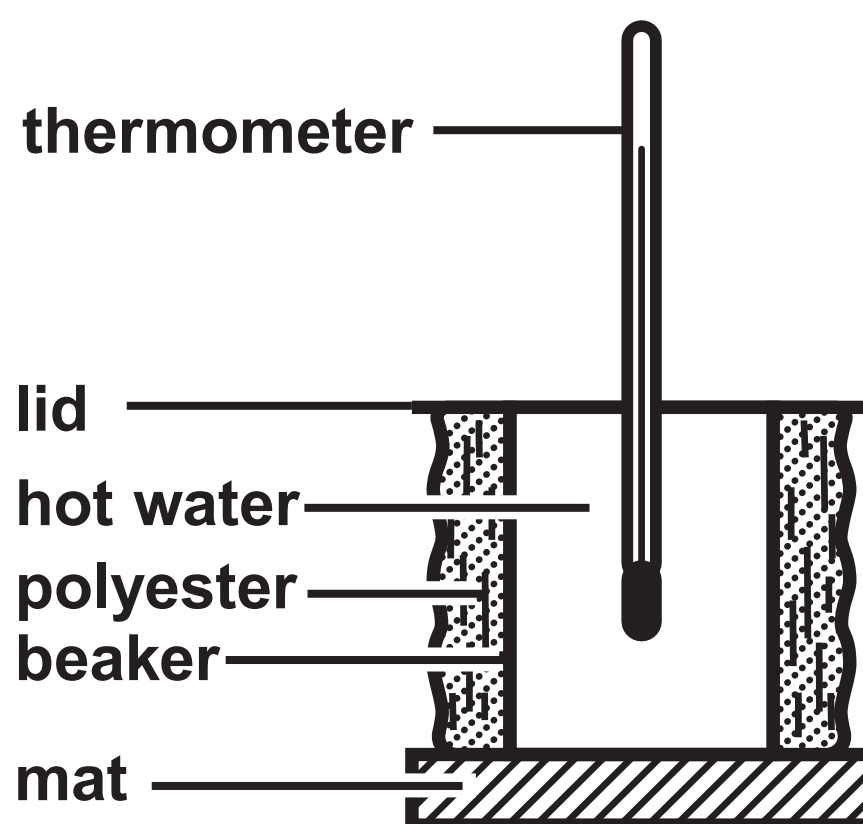
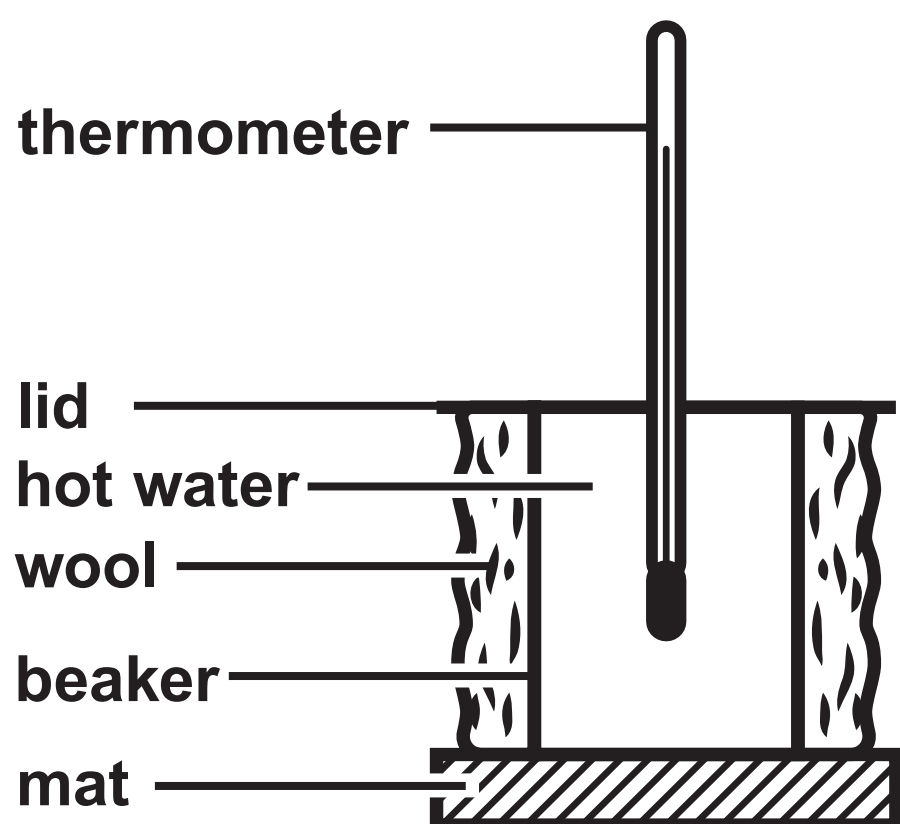
Question 9(c)

FIGURE 16

pH	4	5	6	7 (neutral)	8
colour	yellow	yellowy green	light green	green	blue

## Question 10(a)

FIGURE 17



Question 10(b)

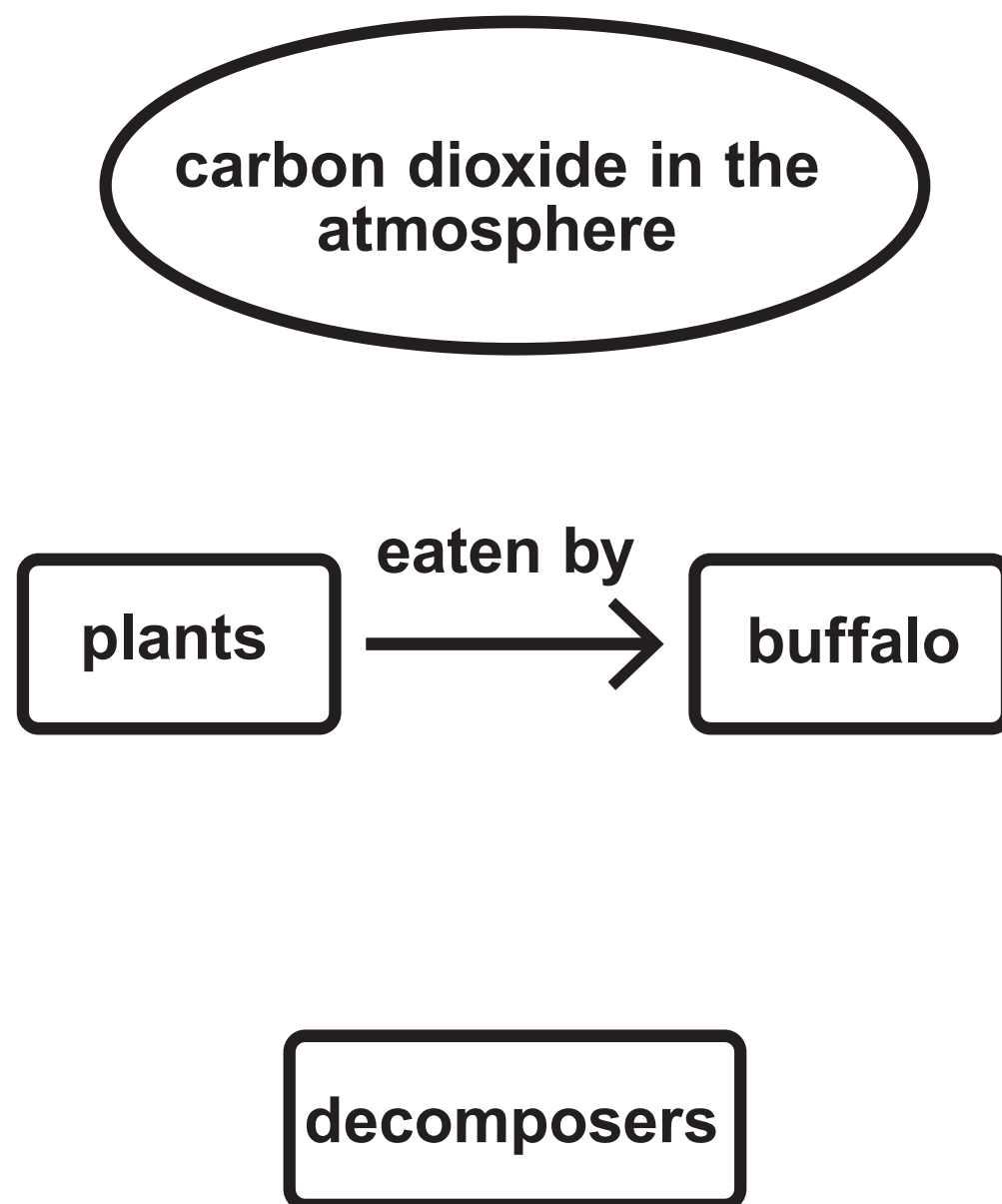
FIGURE 18

wool	
time in minutes	temperature in °C
0	64
2	61
4	56
6	53
8	49
10	45
12	42

polyester	
time in minutes	temperature in °C
0	82
2	74
4	68
6	63
8	59
10	53
12	48

## Question 1(a)(iii)

FIGURE 2





Question 4(a)

**hormone**

thyroxine

adrenalin

**endocrine gland**

thyroid gland

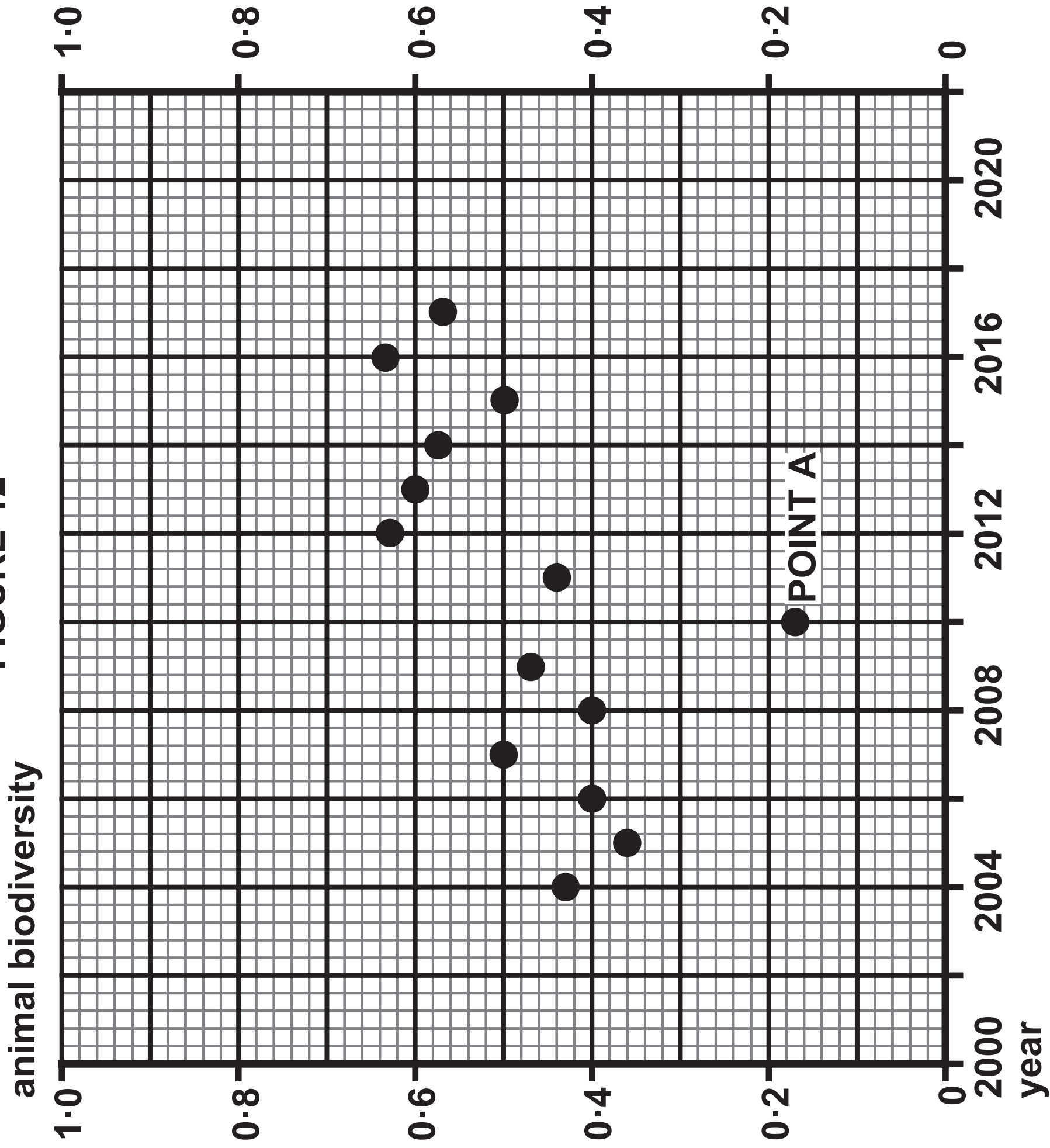
pituitary gland

pancreas

adrenal glands

ovaries

FIGURE 12



## **Acknowledgments**

### **Question 1**

**(source: © Jaromir Chalabala/Shutterstock)**

### **Question 7(c)**

**(source: © Butus/Shutterstock)**